

ATLAS
LANGUAGE
SCHOOL

STUDENT BROCHURE

DUBLIN
IRELAND

- 01/ Studying in Ireland
- 03/ Dublin City
- 05/ Atlas Language School
- 09/ Course Overview
- 15/ Junior Programme
- 17/ Atlas Professional
- 18/ Atlas Study & Work Placement
- 19/ Group Programmes
- 20/ Electives
- 21/ Accommodation
- 23/ Social & Cultural Programme
- 26/ General Info

TRINITY
COLLEGE LONDON



Marketing English in
Ireland

EDUCATION
IN IRELAND
WORLDWIDE STANDARDS
WARMEST OF WELCOMES

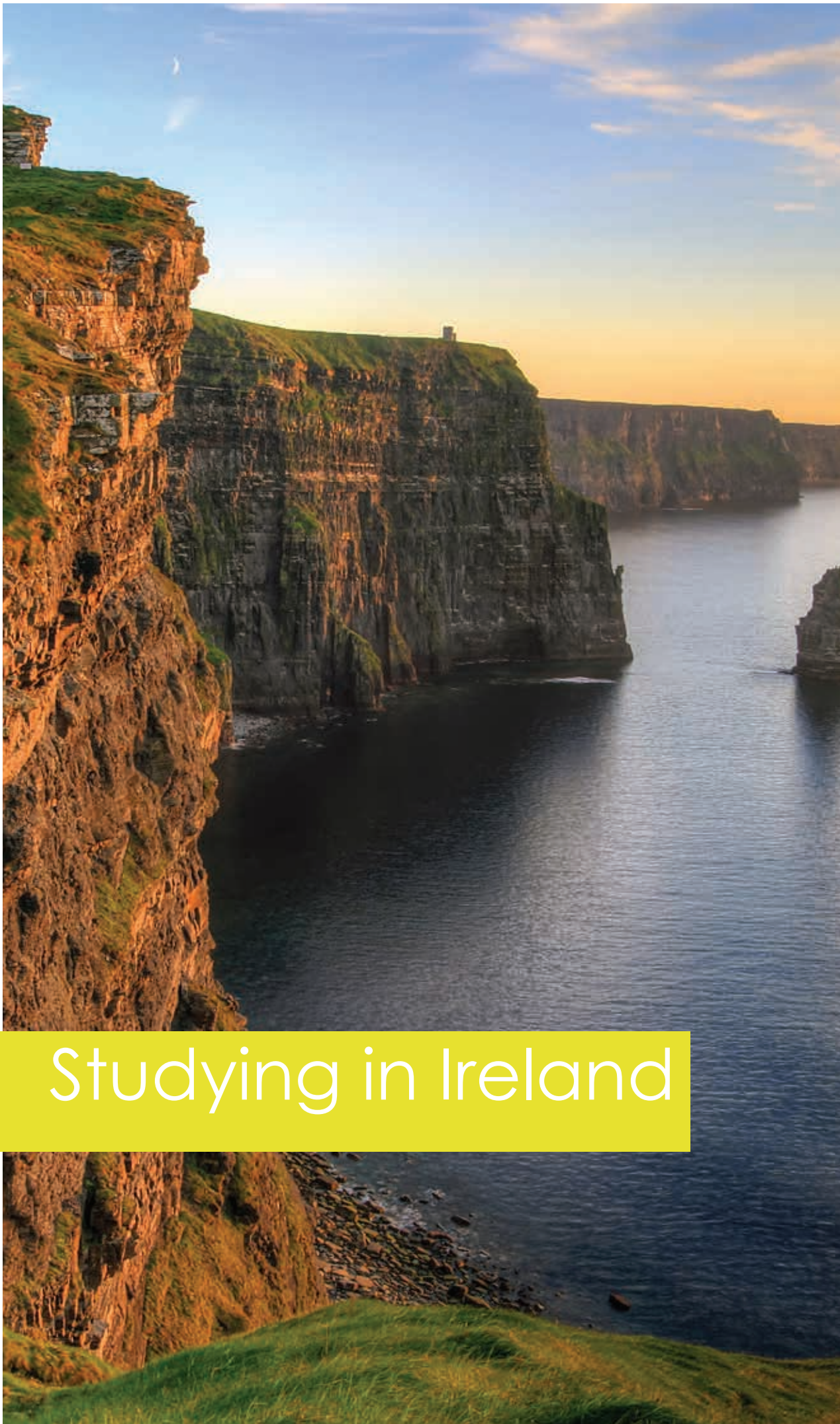
CAMBRIDGE ENGLISH
Language Assessment

Member
2014

ALTO
Association of
Language Travel
Organisations

BULATS

PROGRAMM DES BILDUNGSURLAUBS
// bildungsurlaub
Bildungsurlaub-Service.de



Studying in Ireland

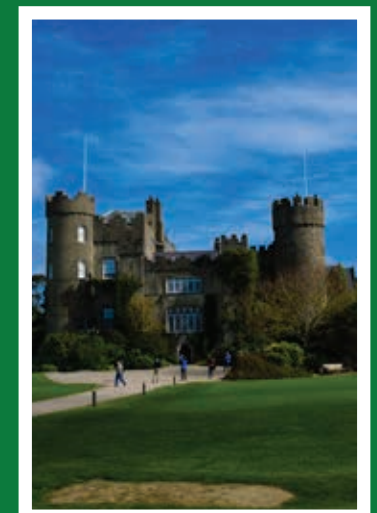
At Atlas our goal is to provide a professional language learning experience in a warm, personal and motivating environment. Our teachers and staff all work to create a school ethos and atmosphere that support the learning objectives of our students in this great city of Dublin, Ireland. We look forward to welcoming you to our school!

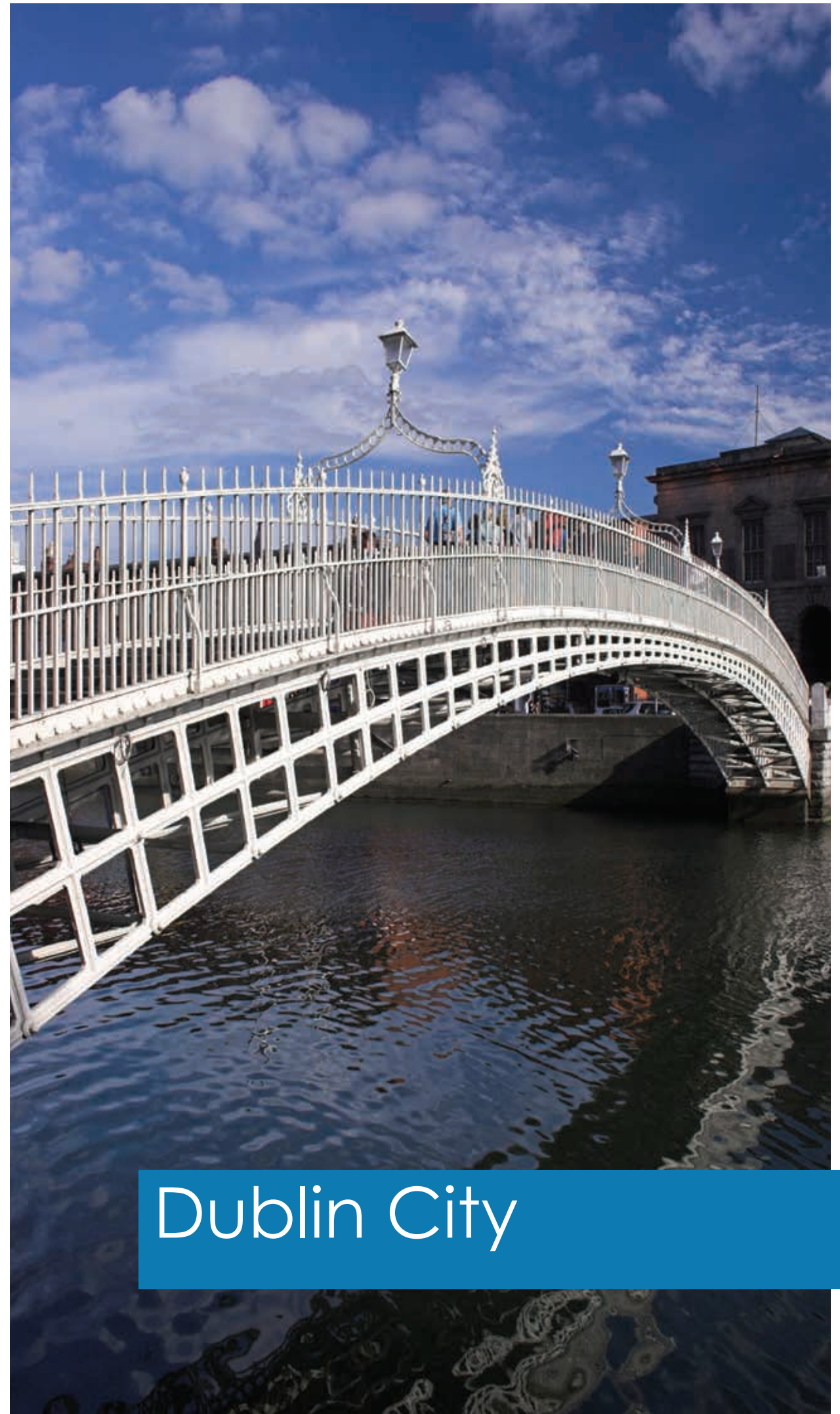
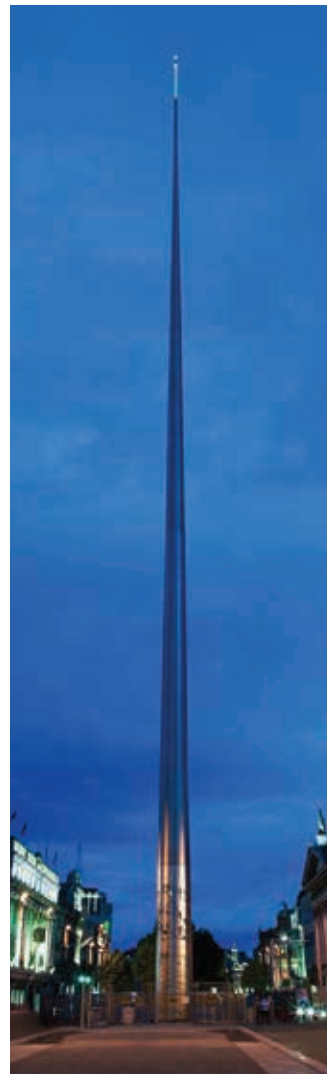
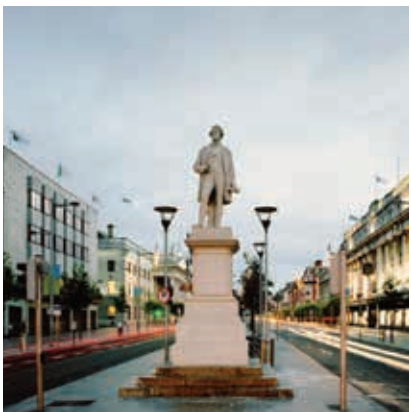
Situated in the north west of Europe facing out into the Atlantic Ocean, Ireland is a country famous throughout the world for its welcoming people, its proud artistic tradition and its stunning scenic beauty. It is also globally renowned for its high standards of education and the quality of its workforce; today many of the world's leading multinationals have their

European headquarters located in Ireland, including companies such as Microsoft, IBM, Intel, LinkedIn and Facebook. Although it has a population of approximately four and a half million people, tens of millions more proudly claim Irish heritage – something that can be witnessed at the famous Saint Patrick's Day celebrations that occur every 17th March in cities

all over the world from Munich to New York.

A strong modern economy, an internationally respected education system and the friendliness and hospitality of the Irish people are just some of the reasons that make Ireland such a popular and rewarding destination for overseas students.





Dublin City

Dublin is a lively, modern, and cosmopolitan city with a population of approximately 1.3 million people. It is located on the east coast of Ireland, at the mouth of the River Liffey. Some scholars suggest it dates as far back as the first century BC, though the town was established proper in the 9th century under the Vikings. Dublin has many of the advantages of a larger city while retaining the charm and tradition of a smaller one. With increased prosperity the city has been attracting more and more people from all over the world to live and work here, and today it boasts a cultural

“ When I die Dublin will be written in my heart. ”
- James Joyce

diversity to match the most cosmopolitan tastes. Over the years there has been an explosion in foreign cuisine, with European, Asian and South American restaurants now a common sight around the city. Surrounded by mountains and located on the coast, visitors to Dublin are never too far away from a scenic view. As the transport hub of the country it also makes it the perfect base from which to explore

the rest of our beautiful island. All this, together with its lively, bustling atmosphere, friendly people and famous night-life make Dublin one of the most popular and most visited cities in Europe.



Atlas Language School



Atlas Language School was set up in 2003 with the aim of providing a unique learning experience in a personal and motivating environment. We are located in Portobello House, a beautiful landmark building that overlooks the Grand Canal in the south of the city.



The school has grown quickly since it was founded and has built up a reputation for excellence in that time.

General, Professional and Examination Preparation courses are run year-round in Dublin, while our Atlas Junior programmes run each summer in Ireland, the UK and the USA.

In addition, we also specialise in designing

language programmes for groups and individuals with specific requirements and have developed strong relationships with many schools, colleges and businesses in Europe and other parts of the world. Much of our school's success has been built on our personal approach and the recognition that every student's language abilities and goals are unique. No matter what type of course

you are doing with us our Academic Manager and support staff are always available to give you regular individual feedback and advice. Our mission is to help you to become a more effective learner and show you how to make decisions about your own learning so that you can set goals and objectives for the duration of your studies and beyond.

inside the school...



CLASSROOM



LIBRARY

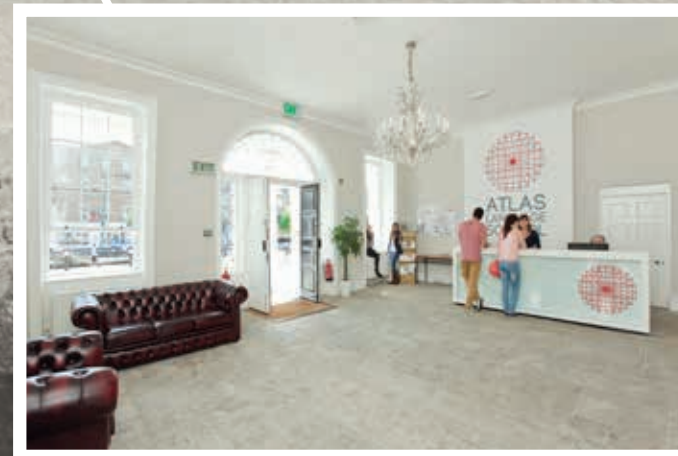
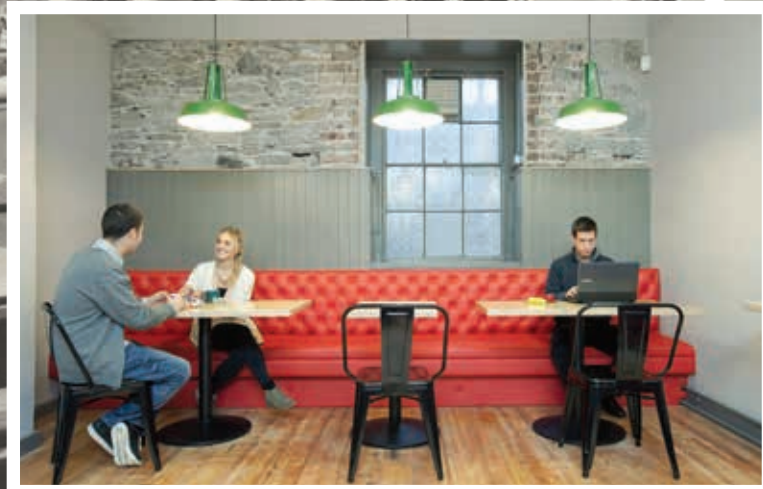


STUDENT ROOM

CAFE

COMPUTER ROOM

LOBBY



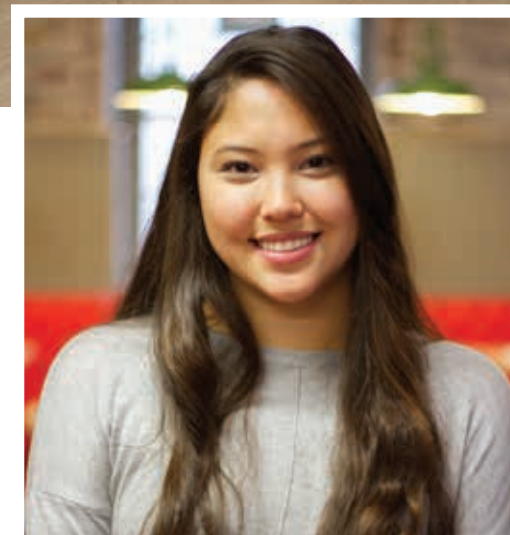
Course Overview



At Atlas we have developed our Language Learning Pathway to provide all learners with a clear description of the objectives for each of our levels. Whether you are with us for 2 weeks, 8 weeks or a year we'll help you design a clear learning strategy based on your individual goals.

We aim to help you better understand and improve your learning and make effective choices on how best to learn English, teaching you skills and learning strategies that you can take with you after you leave our school.

Whatever advice you need, our door is always open. Our Academic Manager and support staff are available at any time to give advice and provide you with regular feedback. We're here to guide your decisions about your own learning, and help you set goals and objectives for your next week of study and beyond.



In addition to providing the best possible environment we also try to ensure that we have the best possible staff. That's why we only hire the most enthusiastic and dedicated teachers and why we have regular training and development sessions to help them achieve their maximum potential. All our teachers are experienced, degree qualified native English speakers and are always on hand to provide individual feedback and advice to their students.

On your first day you will be welcomed by our support staff and our Academic Manager. You will receive a welcome pack containing a map, an introduction to the school, helpful hints and tips on studying and living in Dublin.

General English Courses

General English Fluency (GE20)

20 hours per week

General English Fluency is our most popular course and runs from 9am -1.10pm, Monday to Friday.

The timetable is as follows:

- Lesson A:** 9.00am - 11.00am
- Break:** 11.00am - 11.30am
- Lesson B:** 11.30am - 1.10pm

Lessons A and B are taught by different teachers to give you exposure to a variety of accents and teaching styles. Lesson A focuses on developing your grammar, vocabulary and functional language.

Lesson B focuses on interactive communication with an emphasis on Speaking Skills and Pronunciation. Our teaching is based on a communicative and task-based approach, which means you always focus on effective real-life communication and ways of practising and achieving it.

General English Fluency Plus (GE25)

25 hours per week

The General English Fluency Plus course combines the General English Fluency course with 5 additional hours of classes in the afternoons. These afternoon classes are normally on Tuesday and Thursday afternoons from 2.00pm to 4.30pm. These are small group classes, with a maximum of 6 people per class so are a good option for students who have a short amount of time to study and who wish to maximise their study time with our teachers.

If there are specific areas of English that you would like to focus on during these small-group lessons, the following 'plus' options are also available:

- Fluency Plus with TOEIC
- Fluency Plus with Cambridge
- Fluency Plus with IELTS
- Fluency Plus with Business

Sample Timetable

	MONDAY	TUESDAY	WEDNESDAY	THURSDAY	FRIDAY	SATURDAY
9.00 - 11.00 AM	LESSON 1A: New Students: Placement Test & Induction Current Students: Review & Recycle (HWK 3 review + points arising from previous week's test & feedback)	LESSON 2A: Grammar, Vocabulary and Functional Language	LESSON 3A: Grammar, Vocabulary, Functional Language + Writing Skills HWK3 (Writing Skills) set for Friday	LESSON 4A: Grammar, Vocabulary and Functional Language + HWK1 correction	LESSON 5A: Grammar, Vocabulary and Functional Language	SOCIAL PROGRAMME Full day excursions take place every Saturday throughout the year. Typical excursions include Glendalough National Park, the prehistoric monuments at Newgrange, the medieval city of Kilkenny and overnight stays in Galway & Connemara in the west of Ireland.
11.30 - 1.10 PM	BREAK LESSON 1B: New students join classes + introduce the week's objectives Lesson 1B: Grammar, Vocabulary and Functional Language HWK1 (Grammar & Vocabulary) set for Tuesday	BREAK LESSON 2B: Vocabulary Building, Pronunciation and Speaking Skills Extension HWK2 (Grammar & Vocabulary) set for Wednesday	BREAK LESSON 3B: Vocabulary Building, Pronunciation and Speaking Skills Extension	BREAK LESSON 4B: Vocabulary Building, Pronunciation and Speaking Skills Extension HWK4 (Grammar & Vocabulary) set for Friday	BREAK LESSON 5B: Weekly Review & Test	
2.00 PM	LUNCH New Students: Orientation Tour Current Students: Elective 1 (2pm - 3.30pm)	LUNCH Social Programme 1 FLUENCY PLUS (2pm - 4.30pm)	LUNCH Social Programme 2	LUNCH Elective 2: (2pm - 3.30pm) FLUENCY PLUS (2pm - 4.30pm)	LUNCH Film and Fluency	

Full Course List

General English Fluency GE20	Our most popular course consists of 20 hours of General English group classes per week that focus on improving your accuracy, fluency and confidence in English. These are fun and challenging classes that focus on real-life grammar, vocabulary and pronunciation, as well as on your ability to interact and communicate successfully with people from all over the world. Your teachers will monitor your progress and give you regular feedback to help you use new language with confidence and communicate with others more effectively.	9am - 1.10pm Mon - Fri Age: 18+ Available year round
GE Fluency Plus GE25	The Fluency Plus course combines General English Fluency with 5 hours extra hours of small-group English training in the afternoons. A great option for students who wish to maximise their learning in a short space of time!	9am - 1.10pm Mon - Fri 2pm - 4.30pm Tue & Thur Age: 18+ Available year round
GE Fluency Intensive 25 GE25INT	Fluency Intensive allows students to combine General English classes in the morning with 5 hours individual training in the afternoon. Before beginning this course students will complete an extensive needs analysis and interview with our Academic Manager to design their afternoon programme.	9am - 1.10pm Mon - Fri Age: 18+ Available year round
GE Fluency Intensive 30 GE30INT	This course combines General English classes in the morning with 10 hours individual training four afternoons a week.	9am - 1.10pm Mon - Fri 2pm - 4.30pm Mon - Thur Age: 18+ Available year round
Fluency Plus Exam Preparation	We have a number of exam preparation options for students who wish to improve their level of General English while also focusing on developing the skills and techniques required to succeed in the most popular and widely-recognised English language exams. Students can choose from a number of afternoon exam preparation classes: <ul style="list-style-type: none">• Cambridge First Certificate GE25FCE• Cambridge Advanced GE25CAE• TOEIC Preparation GE25TOEIC• IELTS Preparation (6.0 to 7.5) > GE25IELTS• IELTS Improvers (4.0 to 5.5)	9am - 1.10pm Mon - Fri 2pm - 4.30pm Tue & Thur Age: 18+ Available year round

Cambridge FCE preparation FCE20	We run full-time FCE exam preparation courses that start approximately 10 to 12 weeks before the exam dates in the March, June, August and December Cambridge exam sessions. They are designed and monitored by our senior Academic team who have many years experience teaching the Cambridge exams.	9am - 1.10pm Mon - Fri Age: 18+ Available year round
IELTS preparation IELTS20	We run full-time IELTS exam preparation courses designed and monitored by our senior Academic team. We offer an Improvers class for students who are in the IELTS bands 4.0 to 5.5, and a Preparation class for students whose current level is at band 6.0 or above.	9am - 1.10pm Mon - Fri Age: 18+ Available year round
Atlas Study & Work Placement GE20COM	Our Study & Work Placement programme combines English learning with a quality work placement in a company related to their studies. Work placements are from 4 - 24 weeks and are available in a wide range of sectors. For more information please see page 18.	9am - 1.10pm Mon - Fri Age: 18+ Available year round
Atlas Professional	At Atlas Professional we design highly practical executive programmes which combine both focused language learning and effective team building. For further information or to request an Atlas Professional brochure please contact the school.	Age: 20+ Available year round
Fluency Intensive Business GE25INTB GE30INTB	Part of our Atlas Professional suite of programmes, Intensive Plus allows students to combine General English classes in the morning with 5 or 10 hours one-to-one Business English training in the afternoons.	9am - 1.10pm Mon - Fri 2 - 4.30pm Mon & Wed Age: 20+ Available year round
Atlas Junior ATJUN	Atlas Junior runs each summer in Dublin, Bristol, and Santa Barbara. To learn more about these programmes or to request an Atlas Junior Brochure please contact the school.	Age: 12 - 17 Available July / August
Teacher Training Programme	These training programmes have been designed specifically with the teaching needs of non-native primary and secondary teachers in mind. They are language and teaching skills refresher courses that aim to improve teachers' English language level while also renewing classroom skills and helping teachers keep up-to-date with recent changes in language methodologies.	Age: 20+ Fixed start dates

Atlas Junior



Atlas Language School's prestigious Junior Programmes run every Summer in Dublin, Bristol and Santa Barbara. Our Junior courses allow students to improve their language skills while learning about Irish, British and American culture in a fun and challenging environment.

- A full range of course options including FCE and Trinity Exam preparation, English and Drama and Intensive '4 to 1' courses.
- A network of very experienced, warm and friendly local host families, located within close proximity of the campus.
- Fully secure and supervised residences with student common rooms and free Internet access.
- A minimum of 3 hours tuition each morning (Monday to Friday). Classes include Grammar, Idiomatic usage, Writing, Reading, Aural Comprehension, Conversation and Pronunciation.
- Dynamic and exciting mix of sports, activities and excursions each afternoon, evening and weekend.
- Private transport to and from the school each day.

For further information or to request an Atlas Junior brochure please contact the school.

ATLAS JUNIOR IRELAND

Atlas Junior has been running successfully for over 20 years and is one of the best regarded Junior Programmes in the city. This exclusive homestay programme is centrally located in a leafy suburb of Dublin on private grounds of a school.



ATLAS JUNIOR UK

In 2013 Atlas Junior opened in Bristol, a bustling port city of great beauty, located in the south west of England. Atlas Junior Bristol has a perfect location right in the centre of town, only a minute's walk from the historic cathedral. Both homestay and residential accommodation are on offer in Bristol and the full range of Atlas Junior Courses.

ATLAS JUNIOR U.S.A.

Known as 'The American Riviera', Santa Barbara is the ideal location for a summer study holiday. The pristine coastline, beautiful architecture, easy access to Los Angeles and warm weather capture what every visitor dreams to experience in California. Our centre is perfectly located on the beach, only 10 minutes from the city's famous Spanish colonial downtown.



Atlas Professional

Atlas Professional offers English language coaching programmes to executives who appreciate that advanced language skills are increasingly important to enhance workplace effectiveness. Our suite of programmes is designed to meet specific business needs and aims to develop confident, articulate English-language communicators.

Features of Atlas Professional

- Interview and needs analysis to develop a clear understanding of your business and the goals you have set
- Tailor-made programmes to meet those needs
- Integrated activities, company visits, presentations linked to your interests
- Regular goal setting, monitoring, feedback and reports to you on the progress you have made

What programmes do we offer?

ATLAS PROFESSIONAL TOTAL IMMERSION

Our total immersion programmes run for either 3 days (30 hours) or 5 days (50 hours) and are aimed at groups and individuals who require a highly interactive and practical English language skills total immersion course.

ATLAS PROFESSIONAL IN-COMPANY

These programmes are designed for individuals or small groups of 2 to 6 people from the same company, based either locally or internationally.

FLUENCY INTENSIVE WITH BUSINESS

20 hours group tuition + 5 or 10 hours individual business English training classes in the afternoons.

Our Study & Work Placement programme provides Atlas students with a great opportunity to combine English learning with a quality work placement in a company related to their studies.

Together with our partner organisation we can offer students unpaid work placements across a range of companies and sectors in Dublin. After completing their language studies our Work Placement Officer will match each student's profile, experience and language ability with one of the many local companies we have links with. Work placements are guaranteed once a student attains a minimum level of English.

Work placements are available from 4 - 24 weeks in a range of sectors including:

- Administration
- Communication and Media
- Electronic and Electrical (maintenance)
- Finance and Accounting
- IT (software and hardware)
- Logistics
- Marketing and Business
- Mechanical (maintenance)
- Sales (shop assistant)
- Tourism (hotel and catering)

Electives

Electives are additional afternoon classes that give students the opportunity to diversify and focus on other areas that they have an interest in. These classes are included free as part of General English courses, with different choices available each term. Some of our most popular electives are listed below:

English and Drama

Throughout this popular course students work on various speech and drama techniques such as voice, working with texts, movement, body language, and developing their imagination. The classes have a free and open atmosphere and there is a strong emphasis on having fun!



Study Skills and Academic Development

This course offers students the possibility to improve their study techniques and develop more effective learning strategies that will enable them to perform better and more confidently in their present and future studies.



Conversation

A great way for students to develop their speaking skills in everyday social situations. Each week is structured around a themed lesson where teachers focus on different aspects of developing conversation.



Pronunciation

Improves students' abilities to understand native spoken English as well as improve their own pronunciation and confidence when speaking in English. Emphasis is given to those aspects of connected speech such as controlling pace, stress and intonation and word linking that can quickly benefit students' fluency and confidence.



English in the Workplace

This course is designed to develop students' communication skills in the context of the English speaking workplace. Functional language for applying for a job, contributing in meetings, negotiating, and making presentations are all covered.



English Around the World

See and hear how English is spoken in countries such as England, the USA, Canada, Australia, New Zealand, and Jamaica! Learn about the history, culture and traditions of different English-speaking countries.



Irish Cultural Studies

A very popular course that introduces students to different aspects of Irish history and culture. Topics covered include Irish history and the emergence of modern Ireland, Anglo-Irish writers and literature, Irish sport, and traditional and popular Irish music.



Group Programmes

Since we were founded a large part of our business has been designing group programmes for schools and colleges worldwide. These tailor-made courses are built in close consultation with group leaders and are created to meet the specific language requirements of the students involved.

From the moment you arrive it is important to us that every aspect of your stay is a success and we are committed to ensuring that your programme is planned and designed to the highest standards so that you have the most rewarding experience possible.

We have experience delivering a number of different type of programmes,

including project work, exam preparation, and work experience. Group programmes normally consist of 15 to 20 hours English language training in the morning with integrated social, cultural or academic activities in the afternoon. Programmes also generally include evening activities and weekend excursions.

For further information or to request a quotation or sample timetables please contact the school.



Accommodation

Homestay

Over the years we have built up strong relationships with a number of local families who host our students during their time in Ireland, all of whom are personally interviewed by our accommodation officer and are chosen for their experience and friendliness. Students have the choice of their own room or sharing with a friend. Students of the same nationality are not hosted by the same family except on request or when they come as part of a group.

Hotel / Hostel Accommodation

If students require hostel or hotel accommodation during their stay in Ireland we are happy to help students book suitable places to stay in the area.



Student Residence

For students who do not wish to stay with a host family we have a number of modern, fully serviced apartments available for short-term rent around the city. Due to demand, apartment accommodation generally needs to be booked at least 4 weeks before a student is due to arrive.



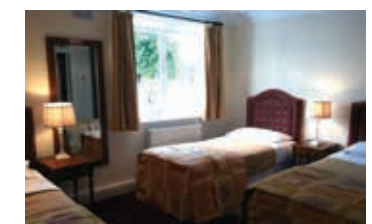
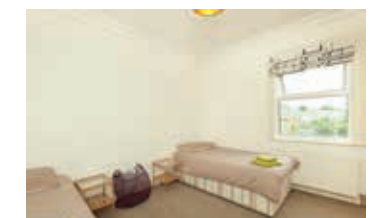
Terenure Park Residence



Terenure Park Residence



Homestay Bedroom



Griffith Hall Residence



Social & Cultural Programme

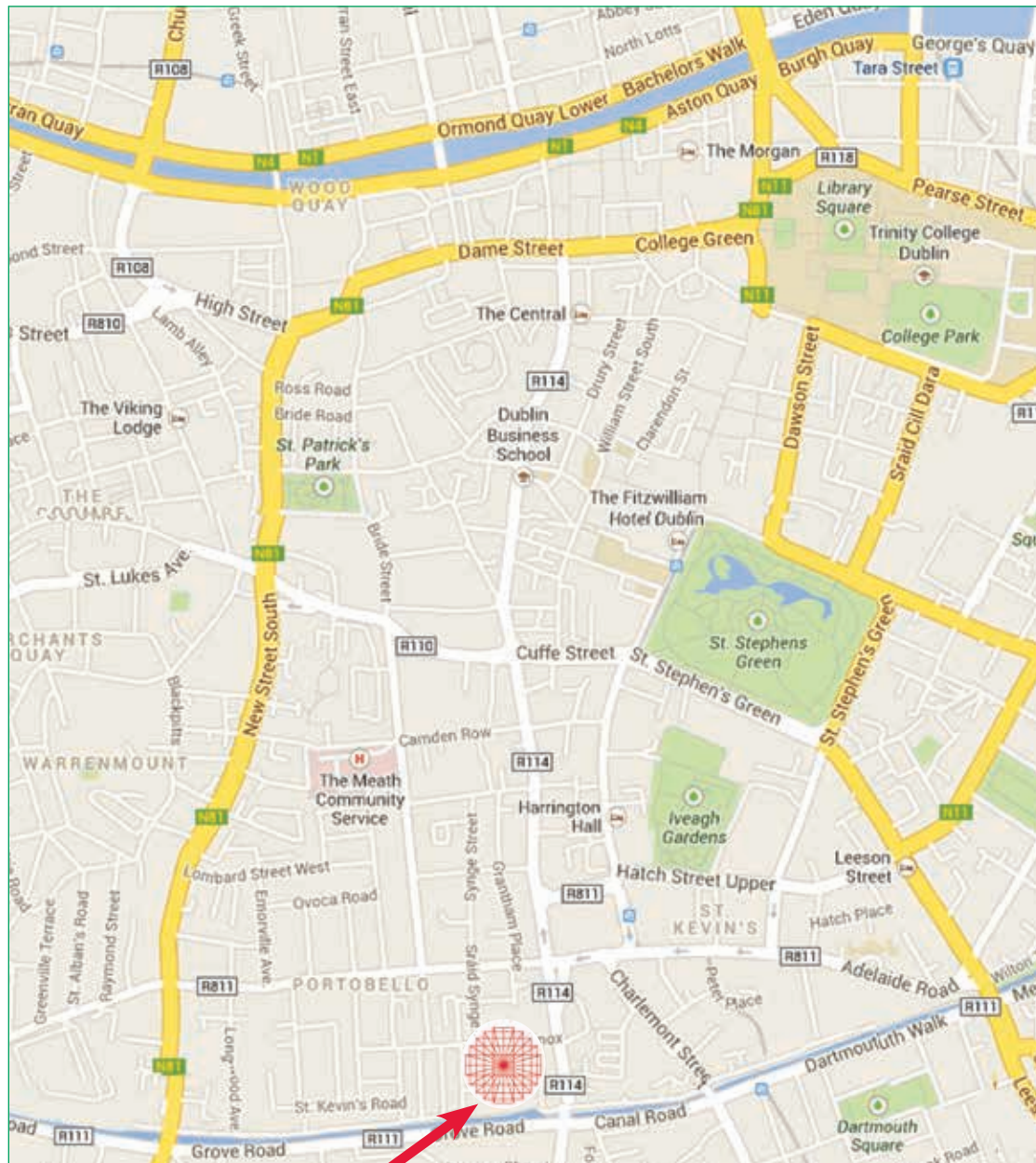
We believe that in order to get the most from their time in Ireland, students should be exposed to English not just in the classroom but in a variety of environments and contexts.

That's why our social and cultural programme is so important to us and why we spend so much time and energy making sure that it is as vibrant and interesting as possible.

We have a dedicated social programme co-ordinator who organises activities, tours and visits throughout the year for our students. These activities are a scheduled part of almost all courses and normally occur after class in the afternoon and evening. We also organise day and weekend trips to scenic areas outside Dublin, such as Connemara, Clare and Galway.

Activities include:

- Art gallery and museum tours
- Visits to the cinema / theatre
- School parties
- Cycling, football and other sporting activities
- Festivals
- Day trips to historical sites
- Traditional Irish music nights



Portobello House, Portobello, Dublin 2, Ireland

Atlas Language School is located at Portobello Bridge, Dublin 2 - only 15 minutes walking distance from Dublin city centre. The school is conveniently located near Harcourt and Charlemont Stations on the Green LUAS Line and a number of bus stops.

Did you know?

- It is estimated that over 80 million people of Irish descent live outside Ireland, in countries such as the United States, the United Kingdom, Canada, Australia, Argentina, New Zealand, Mexico, South Africa and states of the Caribbean and continental Europe. This is 14 times more than the population of the island itself!
- Ireland is one of the world's leading technology centres - the regional headquarters and/or customer service operations of Google, Microsoft, Apple, IBM, Dell, Intel, Facebook and Twitter are all located in Ireland.
- The Newgrange passage tomb in County Meath was constructed around 3200 BC, making it more than 600 years older than the Giza Pyramids in Egypt, and 1,000 years older than Stonehenge.
- Trinity College, the ancient Dublin university set up at the request of Queen Elizabeth I, has had some memorable graduates including Oscar Wilde, Jonathan Swift and, surprisingly, Bram Stoker, creator of Dracula.
- Ireland's most famous drink is Guinness. One of the most successful beer brands worldwide, Guinness was once the largest brewery in the world and remains the largest brewer of stout in the world.
- Ireland has a very strong literary tradition and is famed for its writers and poets. In the 20th century, Ireland produced four winners of the Nobel Prize for Literature: George Bernard Shaw, William Butler Yeats, Samuel Beckett and Seamus Heaney. Although not a Nobel Prize winner, James Joyce is also widely considered to be one of the most significant writers of the 20th century.





“ I'm really happy I chose Ireland to study English because here in Ireland I've found everything - a quiet city, friendly people, beautiful landscape and more! ”

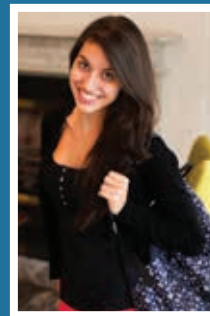
Rashad Ahmedi, Libya

“ Atlas Language School is the best place to improve your English. The teachers are very good and helpful and also show you real friendship. Everyone should have this experience! ”

Zeynep Akdemir, Turkey



“ Atlas is an amazing school with great teachers that will help you achieve fluency while having fun through well-prepared classes and carefully planned activities. Its location is also a plus, since Atlas faces the canal, giving students a heart-warming sight every morning. It's impossible not to start your day in a good mood! ”



Larissa Ravália, Brazil

“ I've studied in Atlas three different times and felt that it was a very positive experience because the teachers make the lessons very interesting and I've met a lot of great people while studying here. I think that I will come back again and again...let's go to Atlas! ”

Lorenzo Raybaudi Massilia, Italy





Portobello House

Portobello

Dublin 2, Ireland

Tel: + 353 (0)1 478 2845

Skype: atlas.reception

info@atlaslanguageschool.com

www.atlaslanguageschool.com

Find us on:

